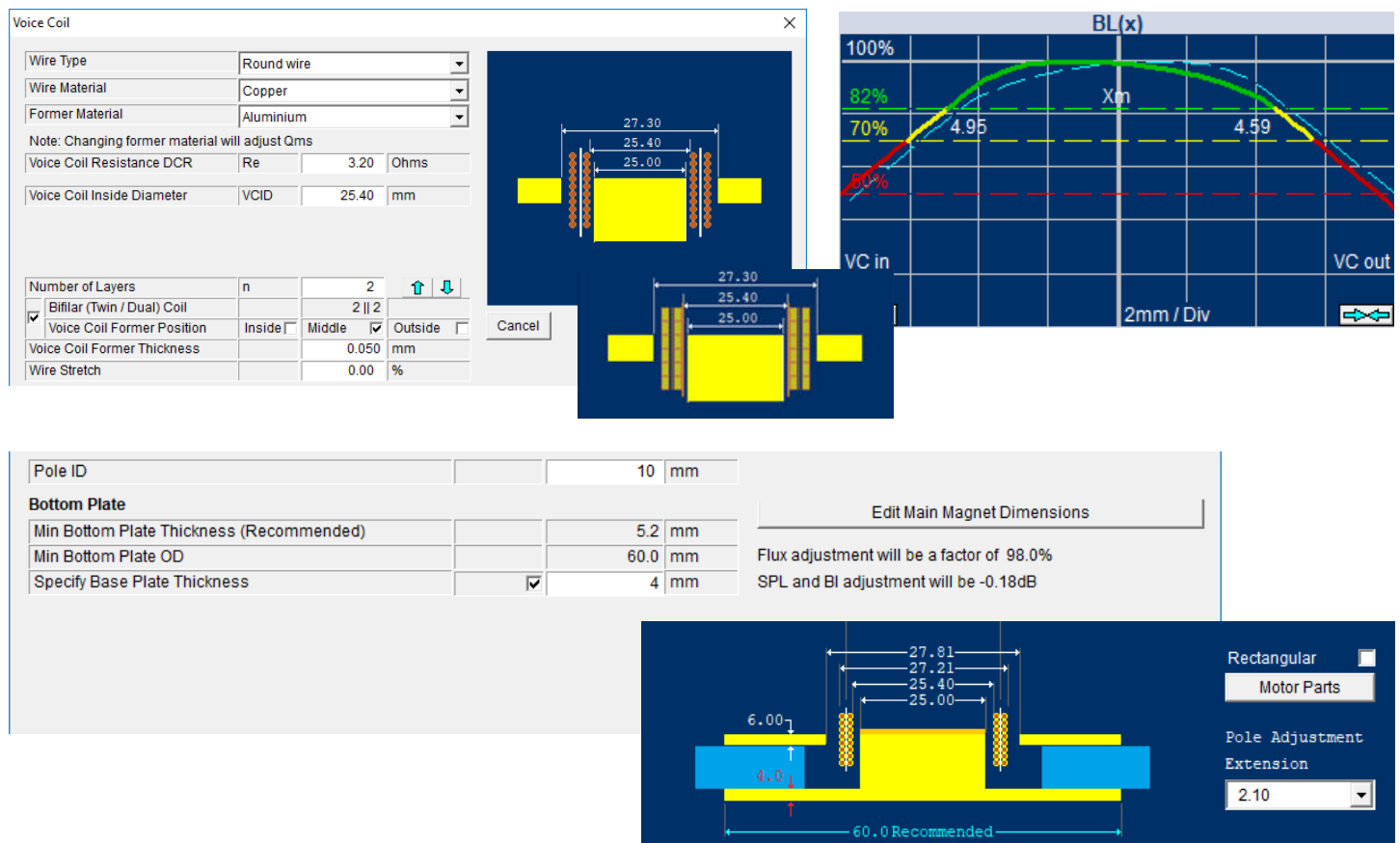


New Features in FINE Motor 2020 PRO™ & Less expensive FINEMotor Standard 2020

- Twin / Bifilar +Multi-layer Voice Coils (PRO)
- Twin/ Bifilar Voice Coils: Former in Inside / Center / Outside (PRO)
- Edge Wound / Flat Wire Voice Coils: 90deg or parallel to VC (PRO)
- Variable Backplate thickness with BL and sensitivity calcs. (PRO)
- BLx curves with 82%, 70% and 50% Xmax limits (Standard)

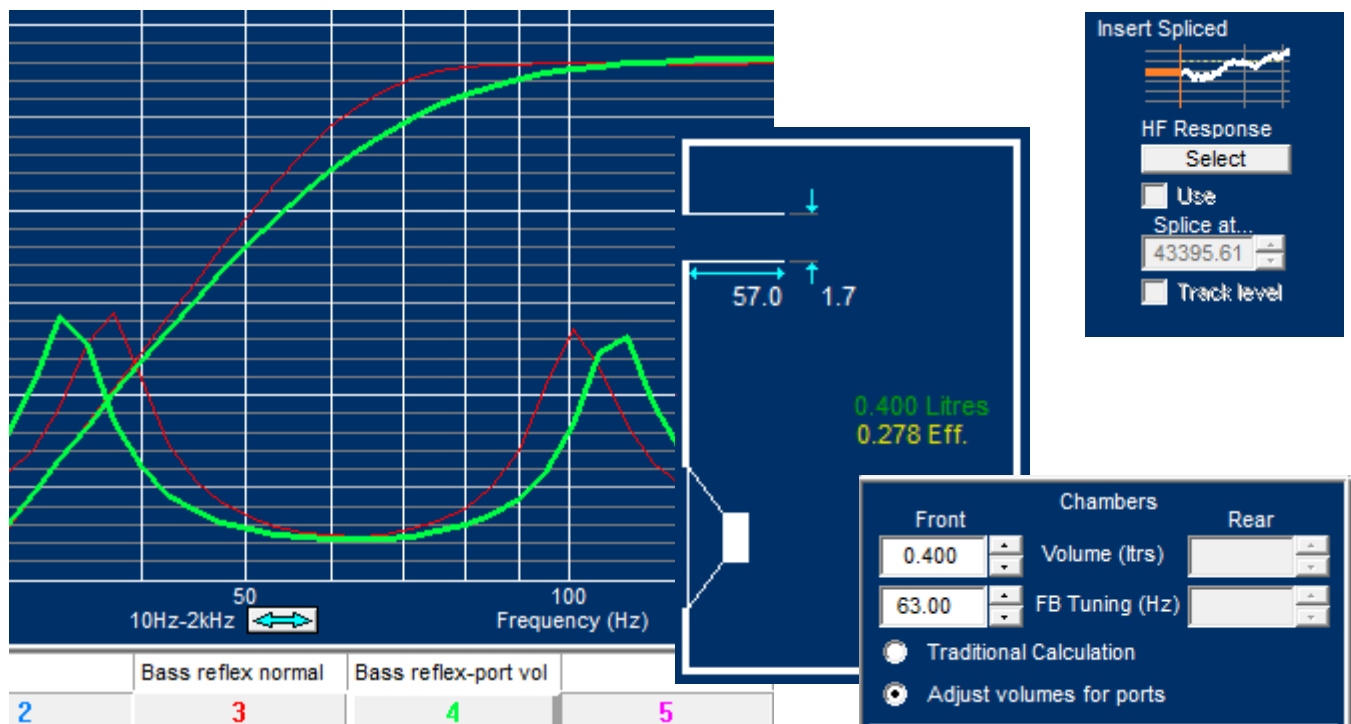
The “Industry Standard” FINEMotor now comes in 2 versions, both containing 36000 FEA calculations: A Standard and a Pro version. The Pro version has all the features, advanced calculations including oval and square magnetic systems that are most commonly used in the design of micro speakers.

With the Standard version, you still have the opportunity to design all round motors including BLx curves, pole geometry, Multi-layer round/edge wire VC's and Neo motors.



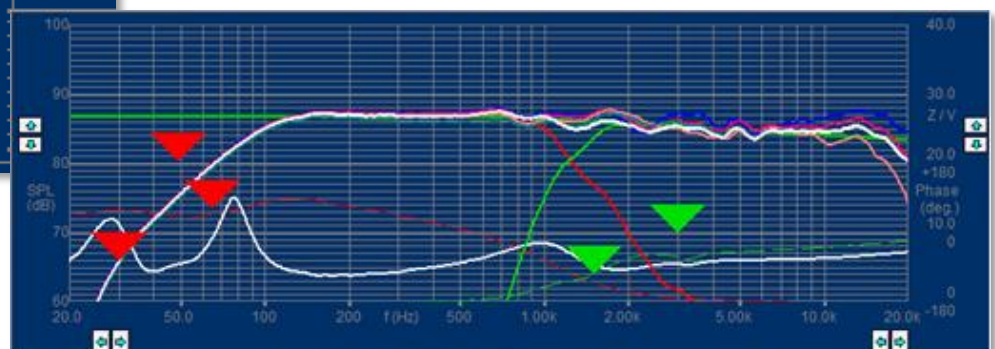
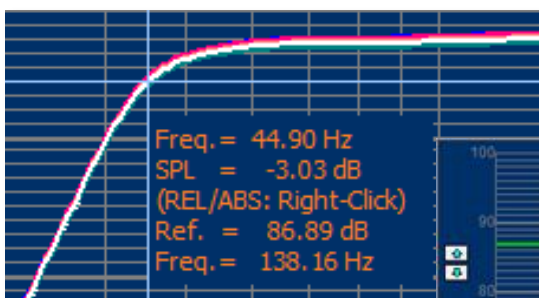
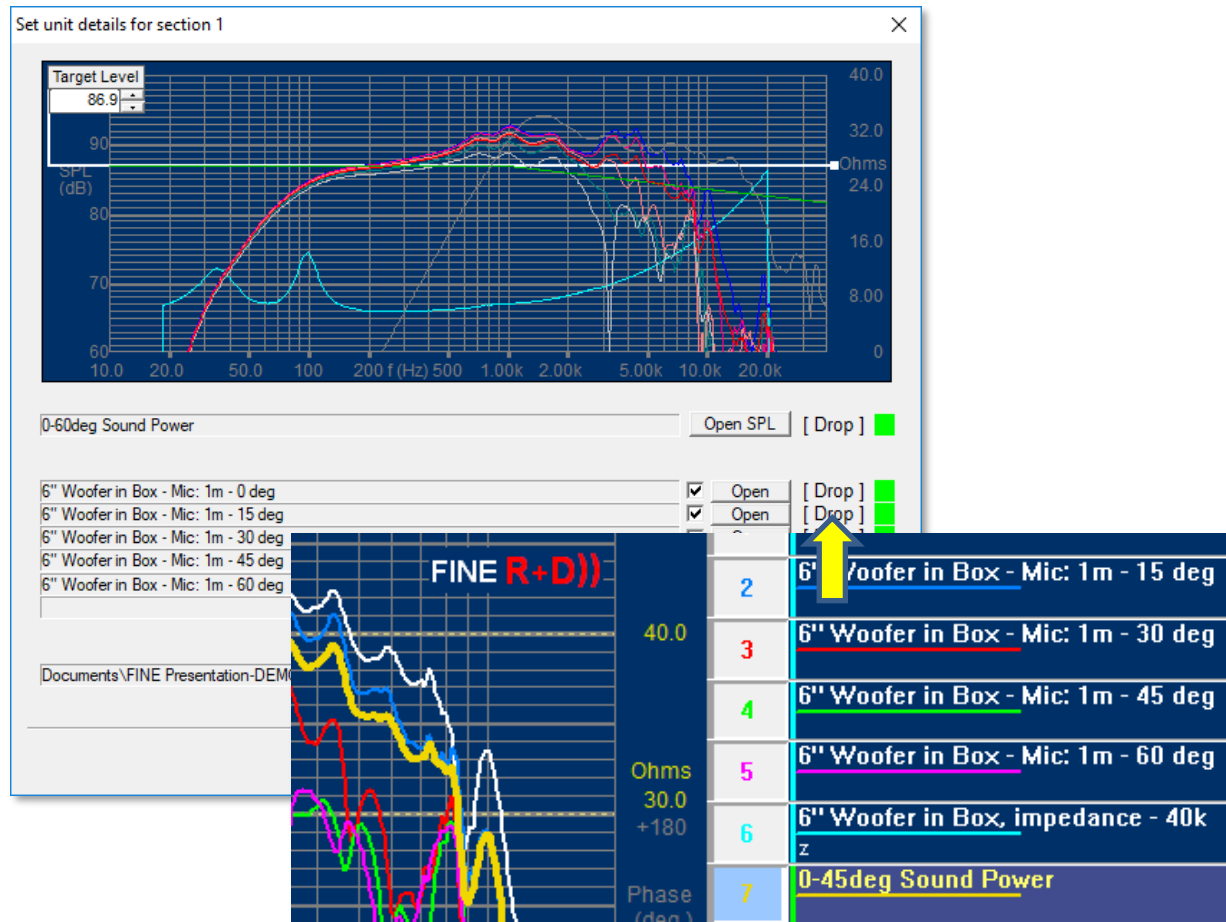
New Features in FINEBox 2019 TM

- Bass Reflex adjusted for Port Volume (= Net volume)
- Save and Load generic TS parameter files in txt format
- Improved splicing of High Frequency responses
- User defined Labels for all simulations
- Export of responses including Woofer in Bass Reflex
- For Windows 7, 8 and 10 (+64bit)



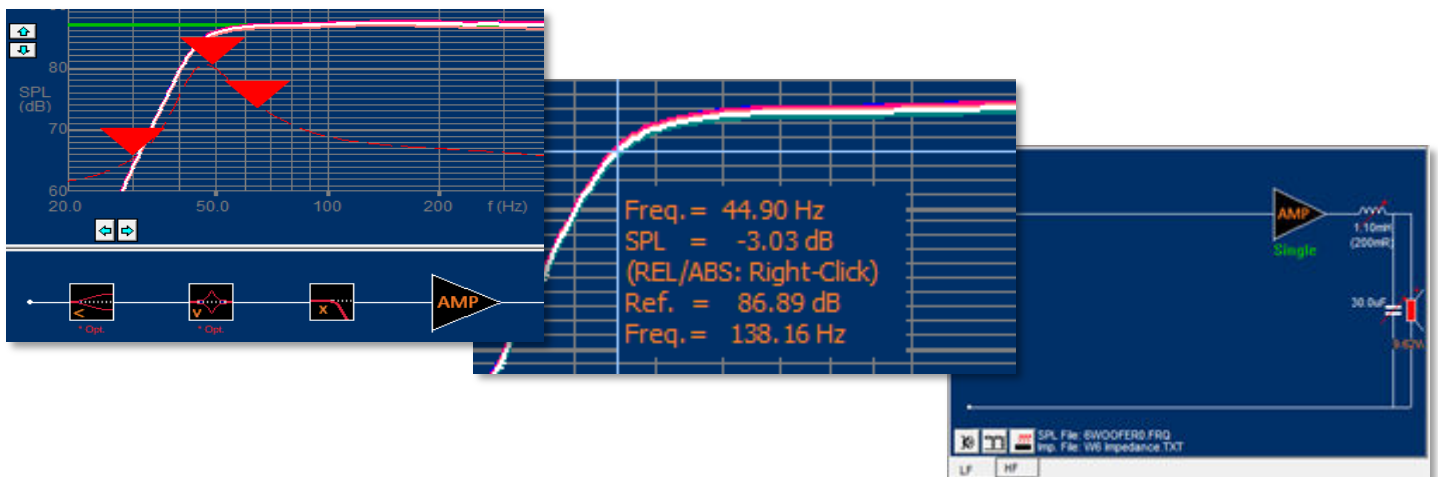
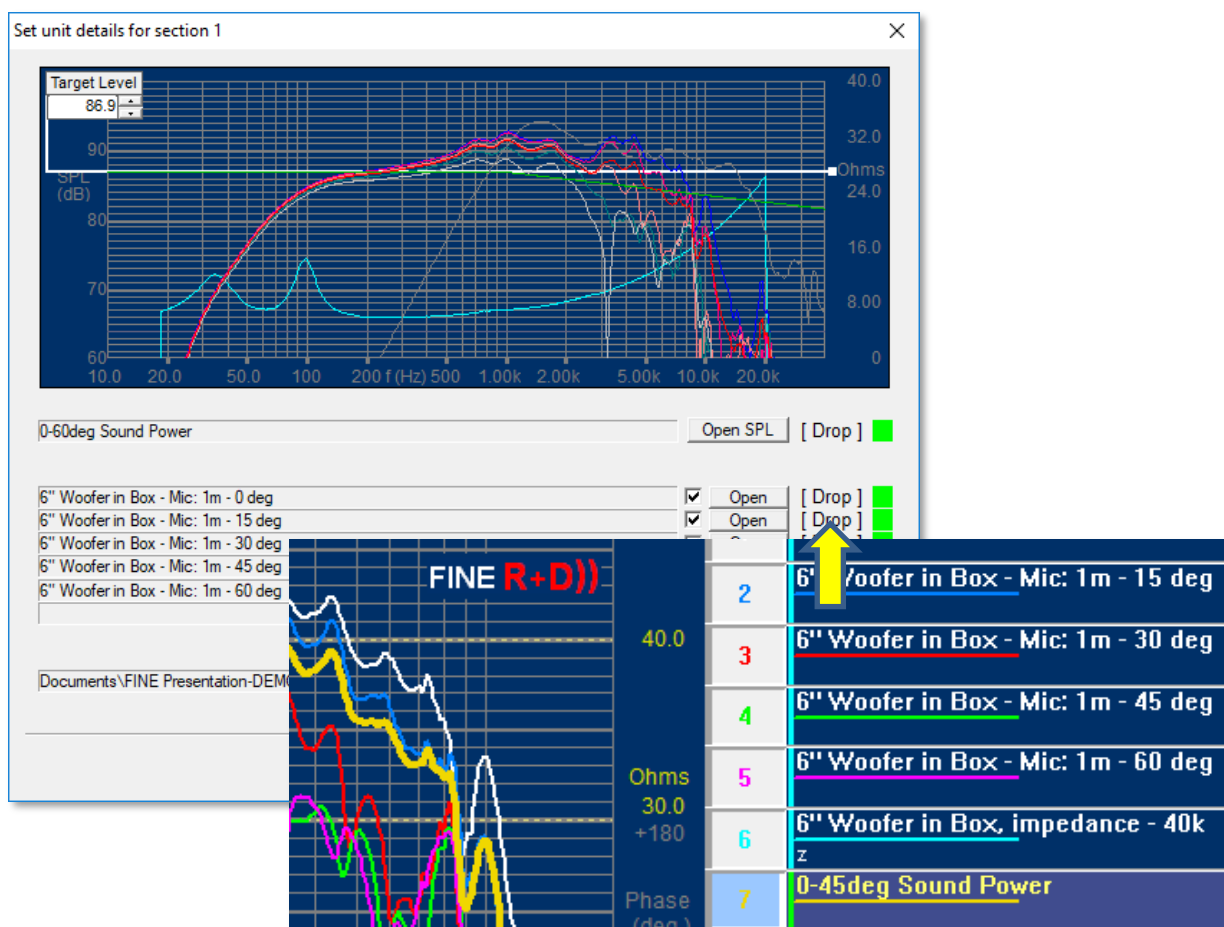
New Features in FINE X-over 2019 TM

- Cursor with both absolute and difference (dB) calculations
- Unit Drive Voltage curves with max SPL points
- Now works with Sound Power responses from FINE R+D
- Drag & Drop responses with phase directly from FINE R+D



New Features in FINE DSP 2019 TM

- Cursor with both absolute and difference (dB) calculations
- Upgraded Unit Drive Voltage curves with max SPL points
- Now works with Sound Power responses from FINE R+D
- Drag & Drop responses with phase directly from FINE R+D
- Upgraded Hybrid/Single Amp cross-overs with optimized passive components +DSP



New Features in FINE R+D)) 2019™

- Sample Rates: 48, 96 and 192 kHz
- SPL and Impedance measurements up to ~100 kHz.
- High accuracy impedance measurements: LO (Low current), HI (High current)
- Bluetooth measurements with Delay compensation
- Bluetooth Pairing using Windows drivers
- GRAS and LOUDSOFT (DPA) microphones connect directly without extra preamplifiers
 - Fast USB-2 Hardware:
 - 3 Microphone input channels with selectable 48V Phantom power
 - Main amplifier 25W, balanced
 - XLR balanced Line Out
 - Built-in power supply
 - Factory calibrated.

